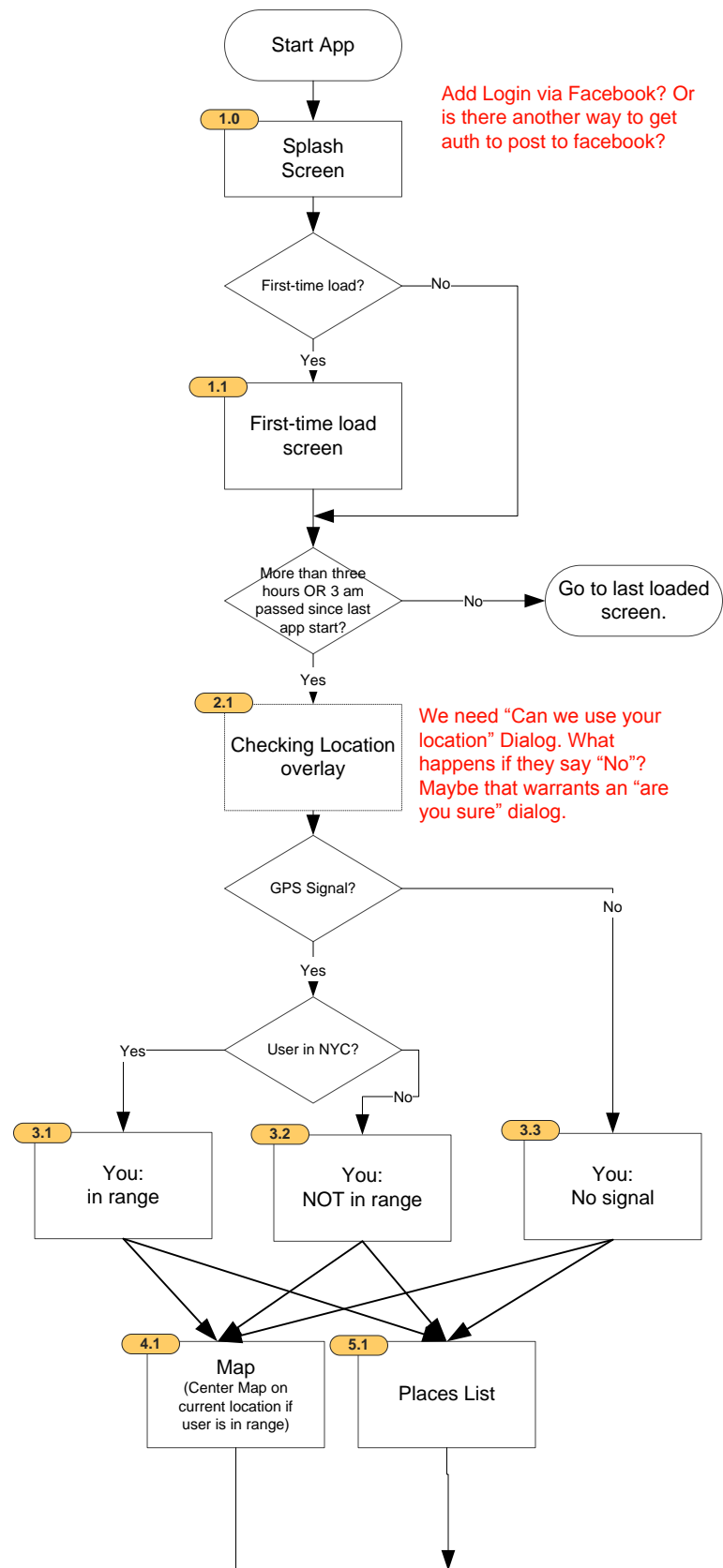
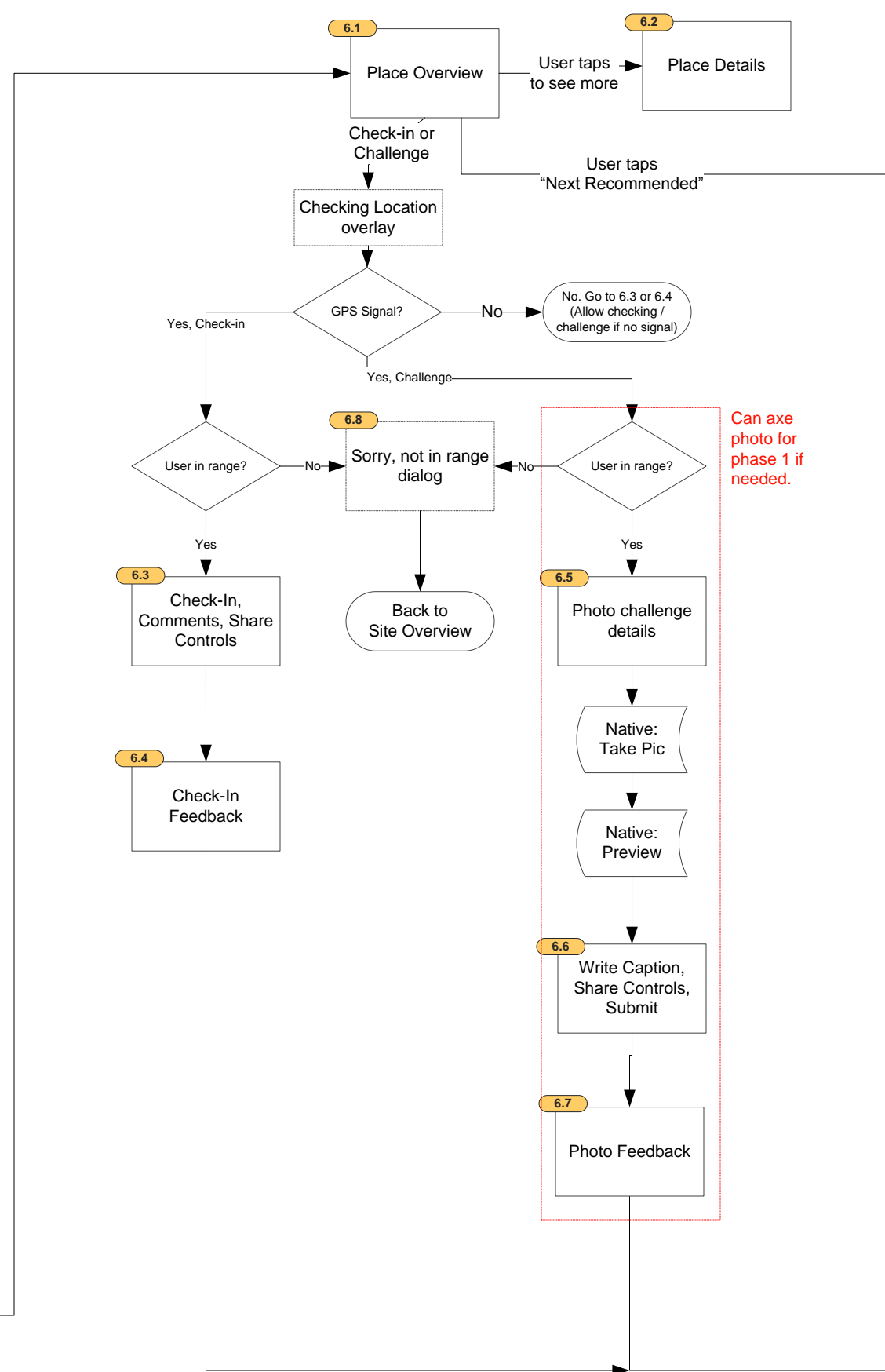


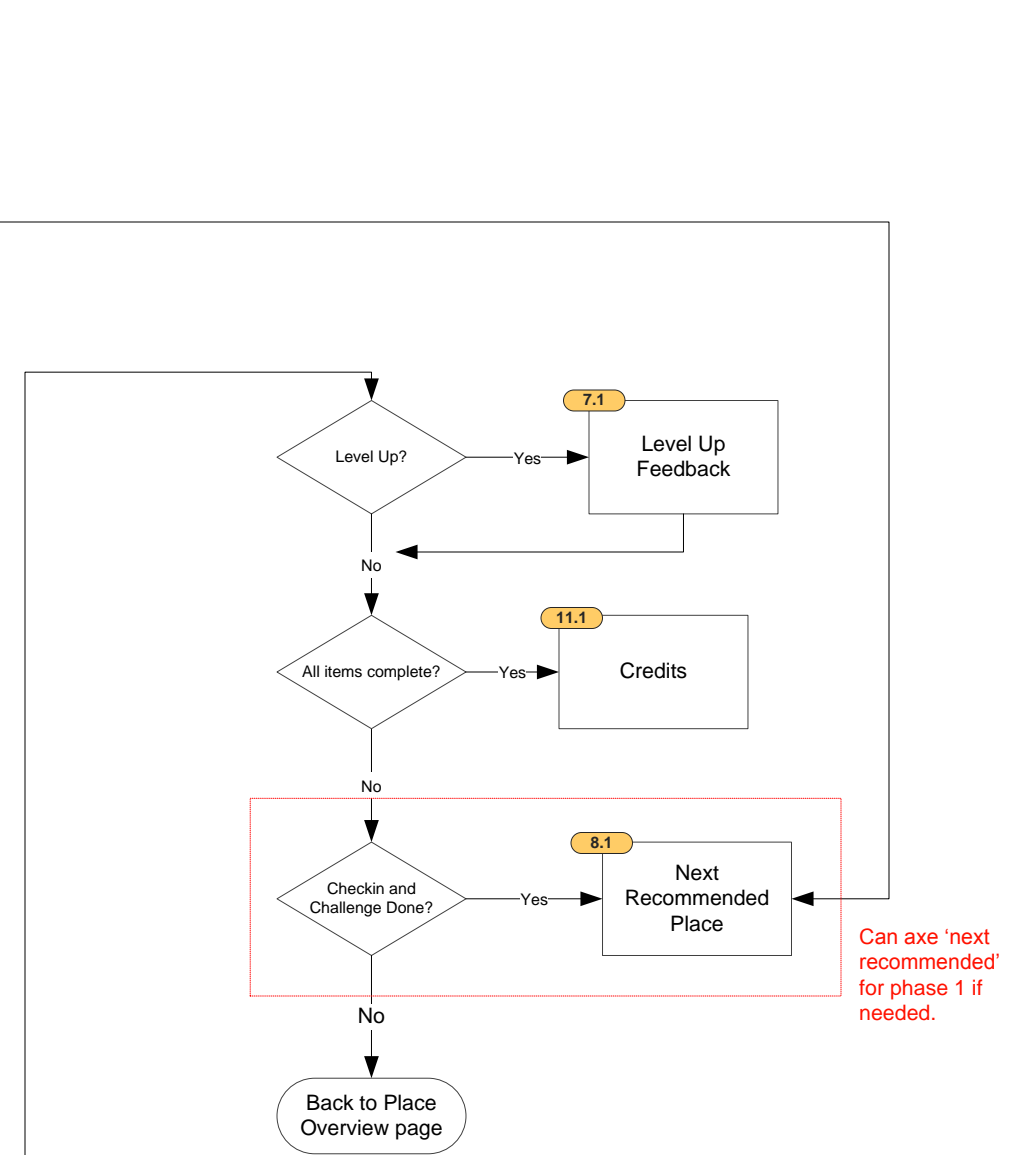
### App Start Logic and Map List / Map



### Site Pages and Check-in / Challenge Logic



### Post-Check-in and -Challenge Logic



## Site Overview

Displays high-level site details and access to check-in and photo challenge.

If check-in and / or photochallenge is already accomplished, it will indicate this.

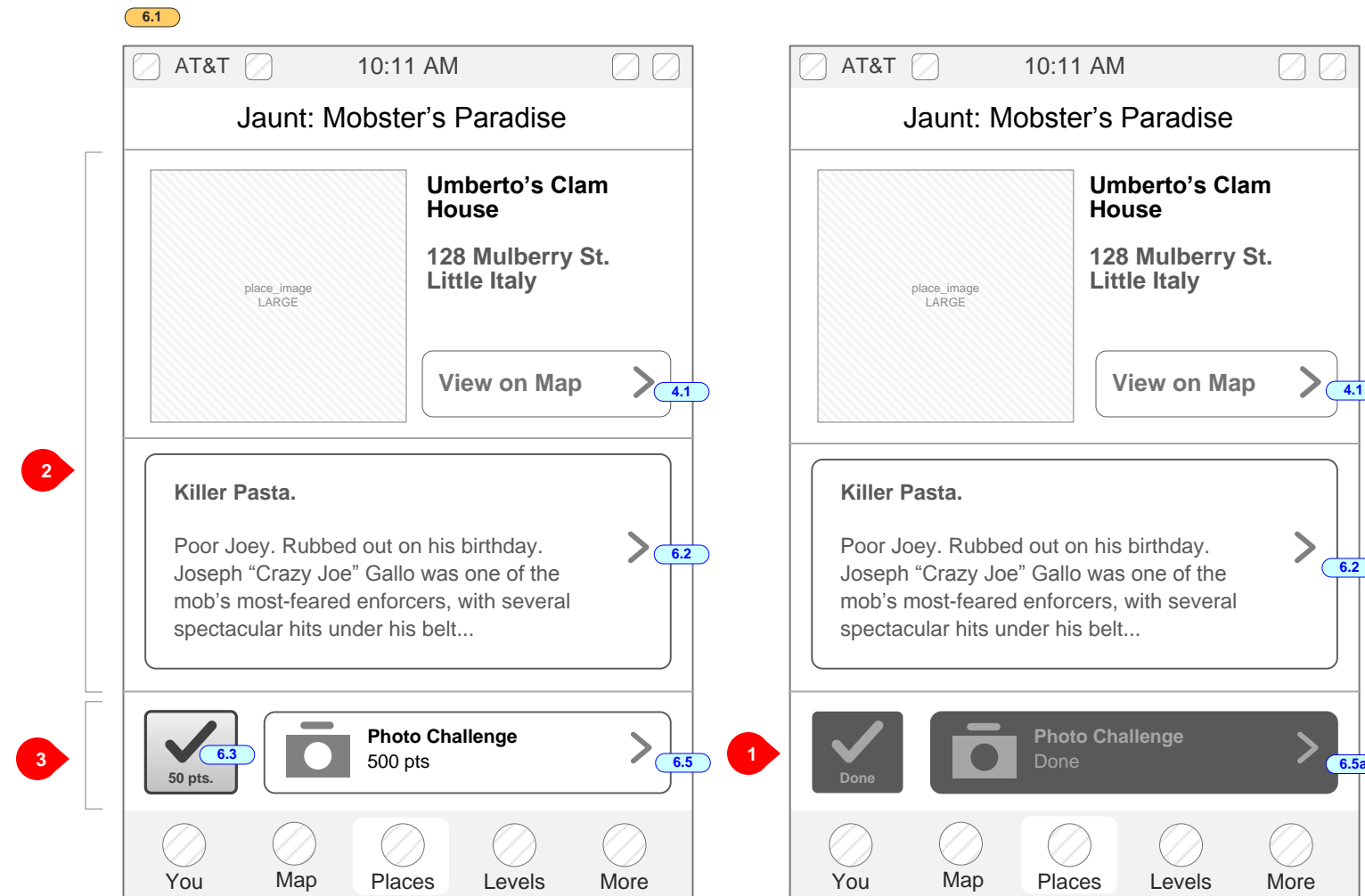
## Notes

1. Showing treatment for “Check-in” and “Photo” done. Color treatment should NOT be gray, rather green or some other color of accomplishment.

2. Center pane scrolls

3. Lock challenge buttons in place...no scroll.

**NOTE:** Can axe “Photo Challenge” button for phase 1. In which case, checkin button runs to width of page.



Place overview, check-in and photo not done.

From the data table for each item on screen:

```
place_image
place_name
place_address_street
place_neighborhood
place_tagline
place_desc (truncated w. "...")
place_checkin_points
place_challenge_points
```

Place overview, check-in and photo done, NO “next-recommended” to display.

## place\_image Photo Sizes

All photos for `place_image` (the main photo for a place) will be square.

We will have four sizes of `place_image` for use in different parts of the app, as defined to the right.

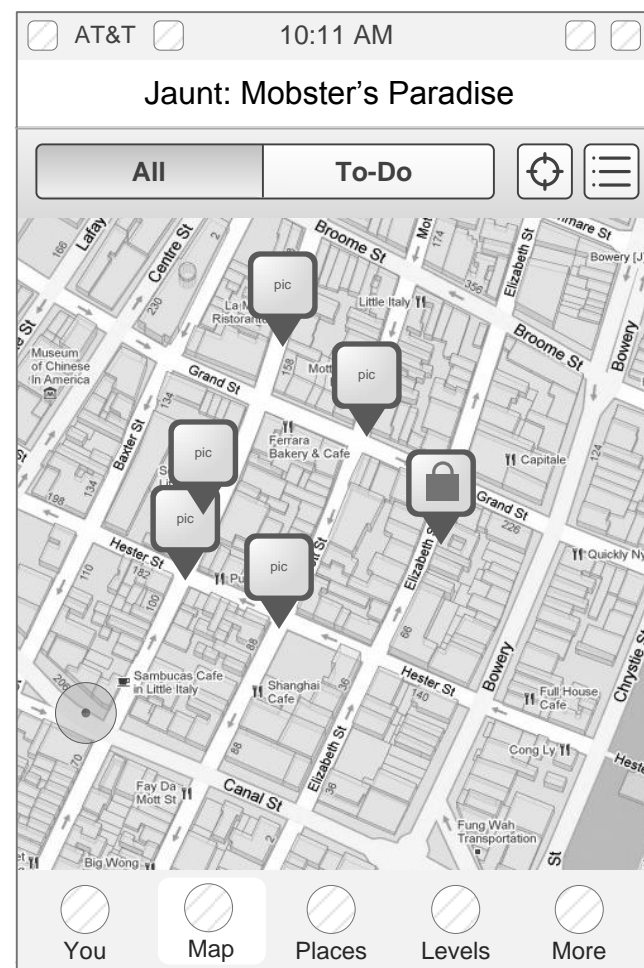
Measurements are approximate...final pixels dimensions will be determined by visual designer.

**SMALL:** 33 px square  
Map, Pin, Small,

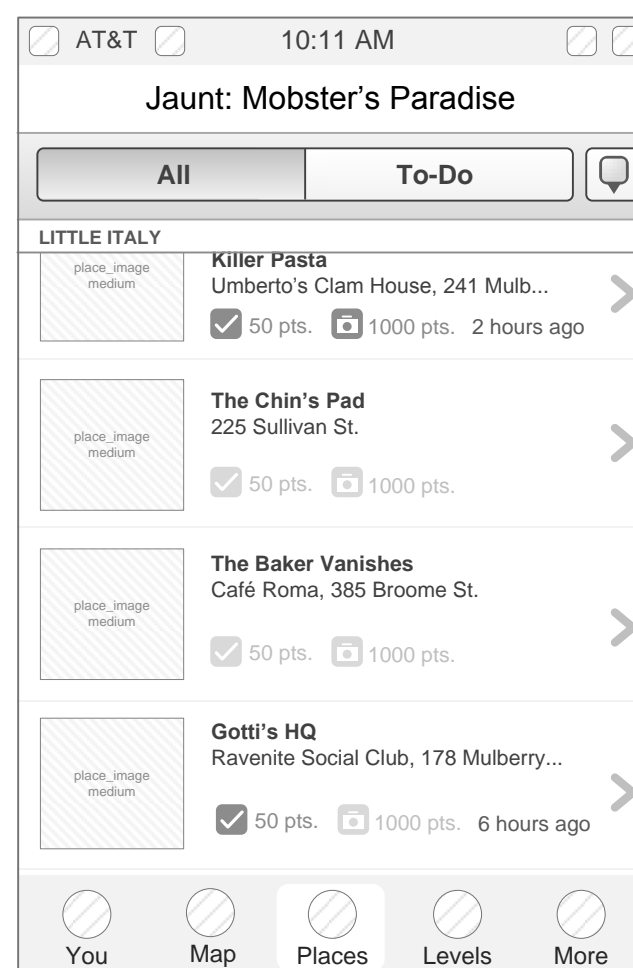
**MEDIUM:** 76 px square  
You, History, uses Place List photos  
Place List  
Map Pin expanded  
Check-in comments  
Challenge comment

**LARGE:** 279 px square  
Place Overview  
Place Details in-page carousel  
Next recommended place

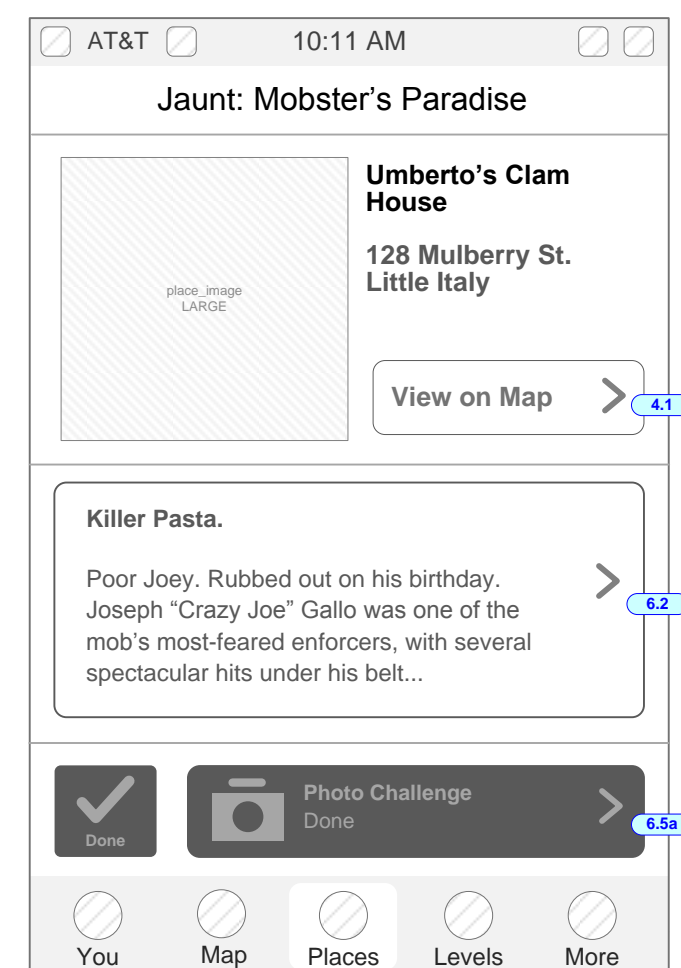
**FULL SIZE**  
Place Details iOS full-size carousel: 320 px square



Map pins use "place\_image\_small"



List view uses "place\_image\_medium"



Place overview view uses "place\_image\_large"

## Places List View

Showing display of places grouped by neighborhood.

If user has arrived here by clicking “list” icon on map, load current neighborhood (so if little Italy is halfway down the list, load Little Italy header at top, but allow user to scroll up to see what’s above it).

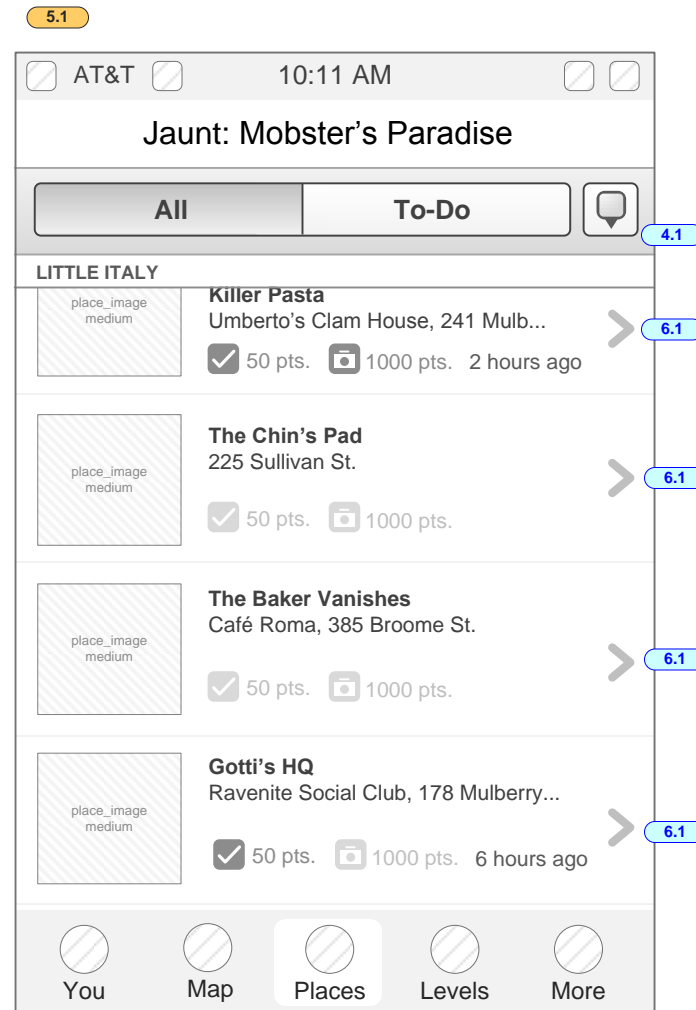
If not from map, load at last point accessed.

If no known last access, load at top.

Within neighborhood, sort should be alphabetical on NAME. This means we’ll need a NAME for everything, I think. Is it possible to designate an address as a name if there really isn’t a name for the location?

## Notes

no notes.



From the data table for each item:

```
place_image
place_tagline
place_name
place_address_street
place_checkin_points
place_challenge_points
```

Neighborhood group headers should scroll up and stop a top of page till next header come up (like alphabet on iTunes).

Tap on Pin to switch to map view. Load last map view, don't try to center it on the current neighborhood being viewed in list.

Tap on “To-do” to filter so only items where NEITHER checkin or challenge has been done.

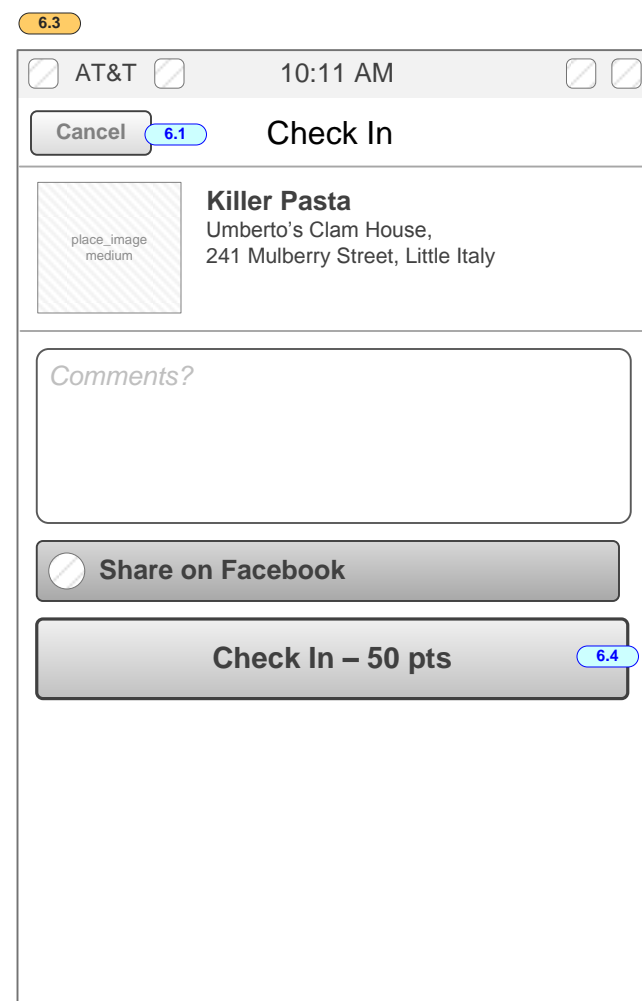
## Place Check-in

Screens for check-in.

### Notes

Need to investigate Facebook share process.

(No Twitter for launch)

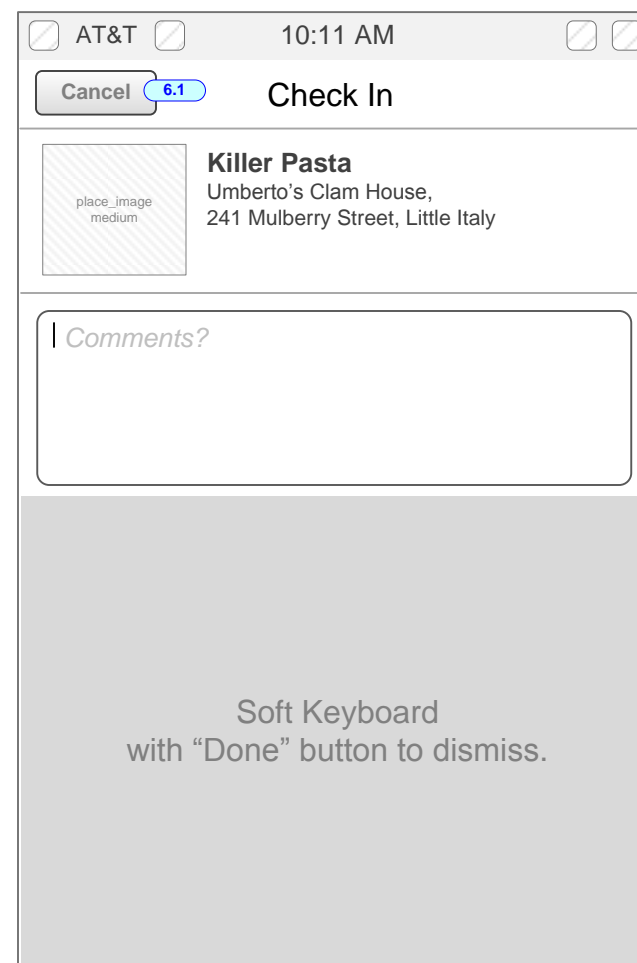


Page loads as shown.

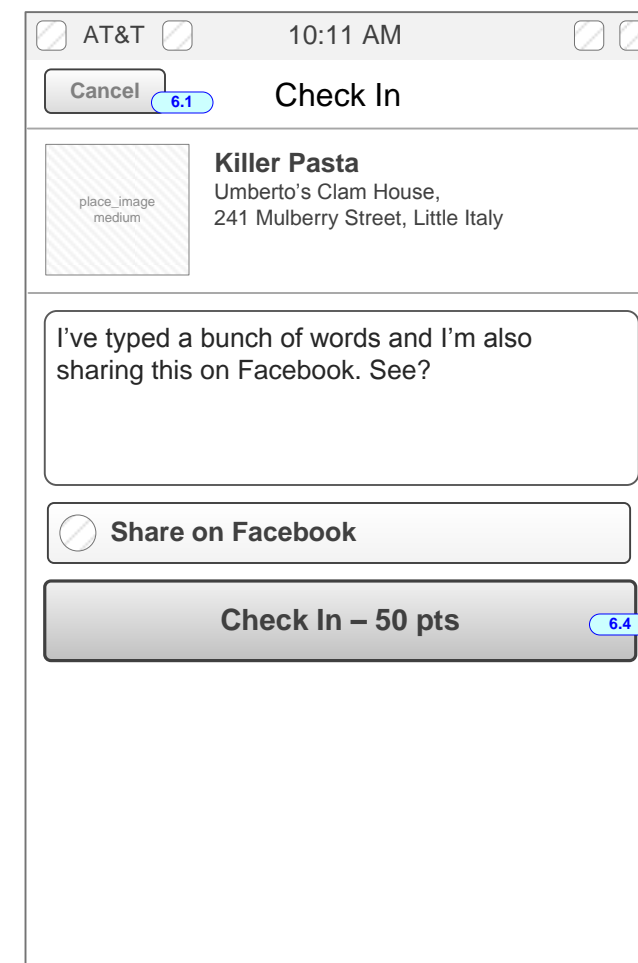
Default to "Pressed" for "Share on Facebook."

From the data table for each item on screen:

```
place_image
place_tagline
place_name
place_address_street
place_neighborhood
place_checkin_points
```



onTap into Comments field, load soft keyboard and show cursor. When user starts typing, "Comments?" disappears from field. If user deletes all typed letters, "Comments?" should reappear.



User has typed and dismissed keyboard.