

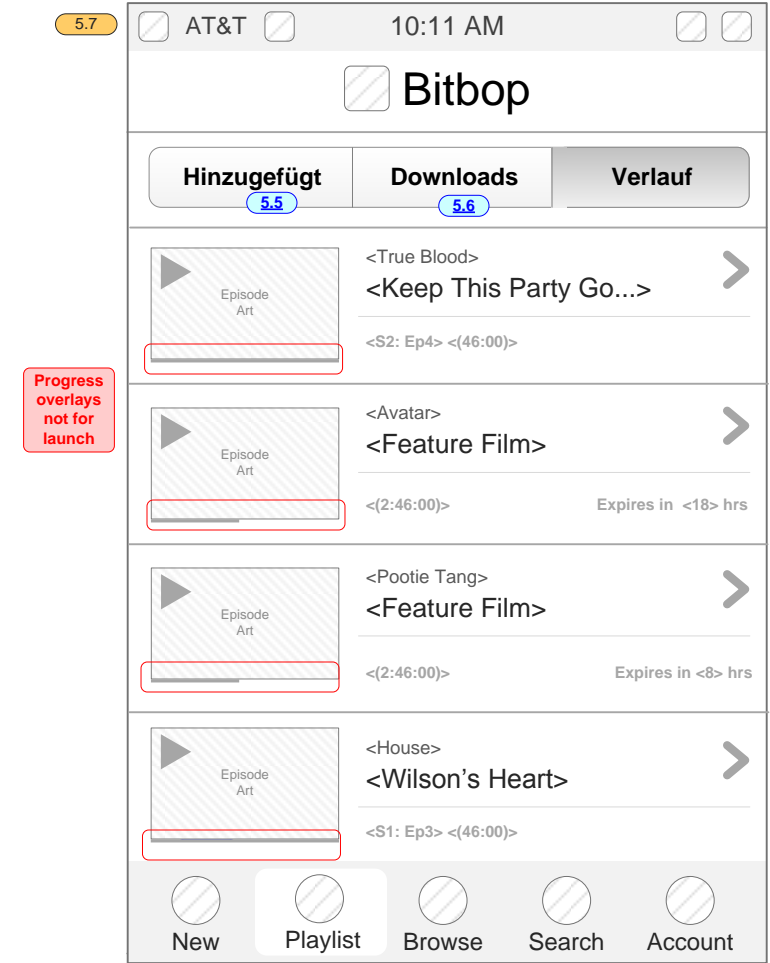
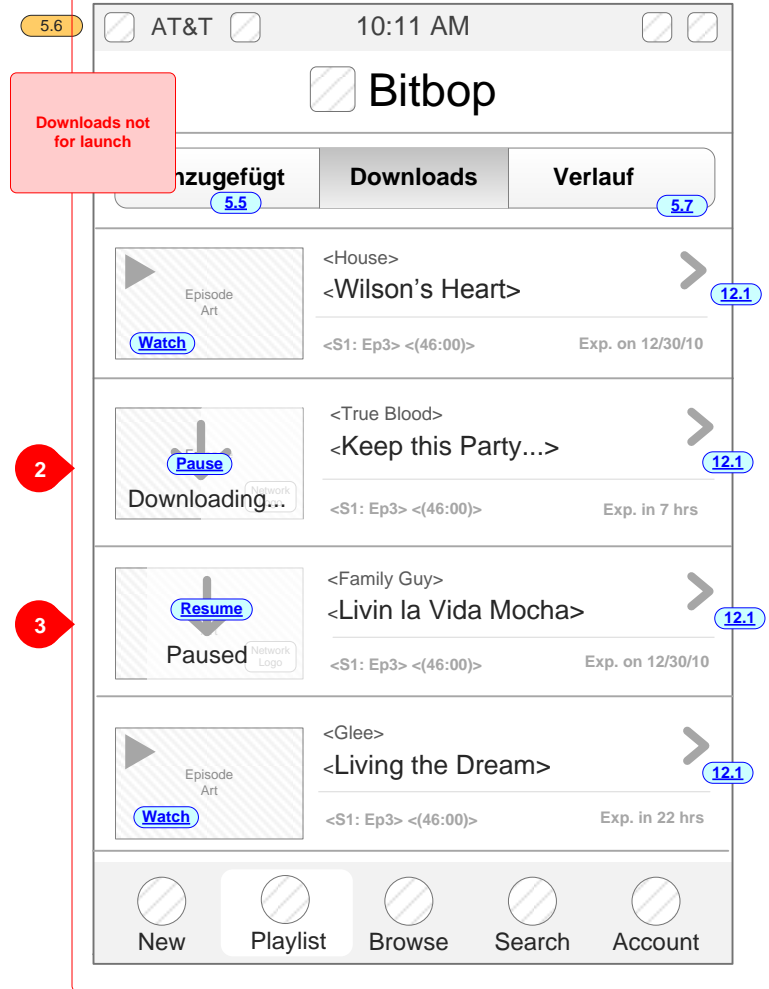
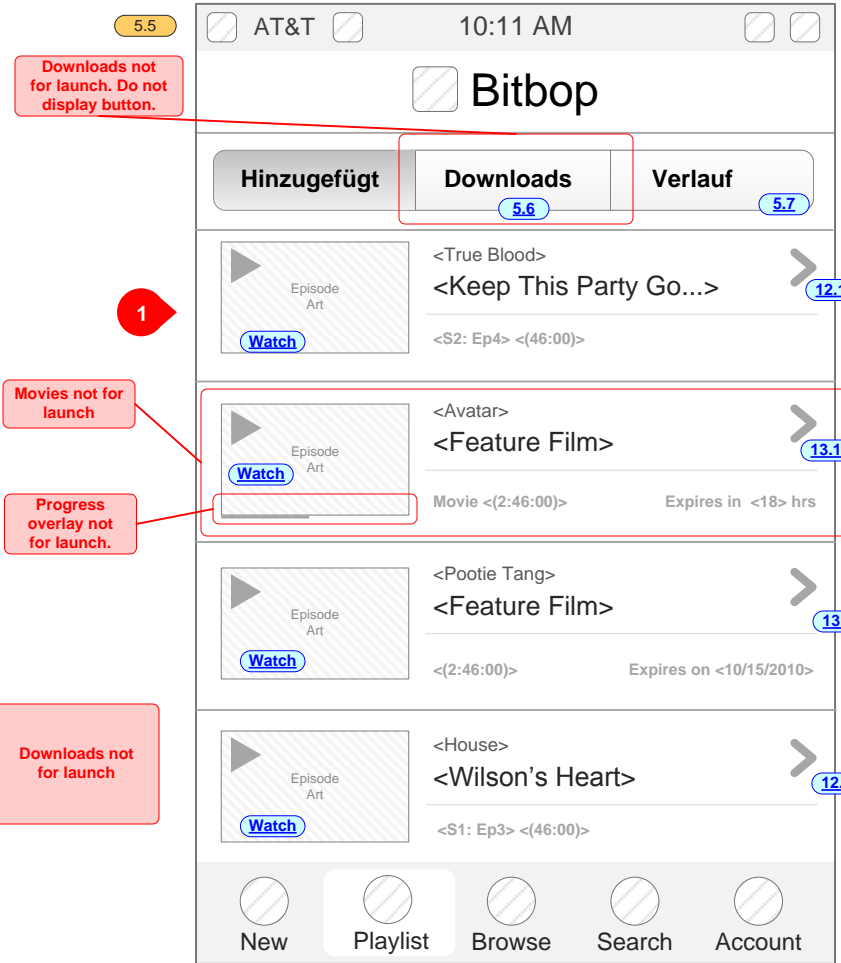
Browse – Playlist

- Playlist stores items that user has Playlisted, downloaded, or recently watched. Users may toggle between
 - **Playlist** (all items added to Playlist)
 - **Downloads not for launch**
 - **Recently Watched (Verlauf)** (all items watched, regardless of whether they were added to Playlist)

Browse has no pagination; load 20 items at a time and add more as user scrolls

Notes

1. onTap episode art. This will initiate playback.
2. Showing item mid-download. Use transparent overlay on art to show download progress.
3. Showing item paused during download.
4. Swipe left on any line item in "Playlist" see the "Remove" button, which will remove from Playlist, or Downloads, or Recently Watched, as appropriate. Slide other items up once item is removed.



Movies not for launch

Progress overlay not for launch.

Downloads not for launch

2

3

Progress overlays not for launch

4

When downloads are completed for subscription content, show expiration of content.

- If expiration is in MORE than 24 hours, show: "Exp. on <mm/dd/yy>"
- If expiration is in LESS than 24 hours, show: "Exp. in <x> hrs"

Downloads not for launch

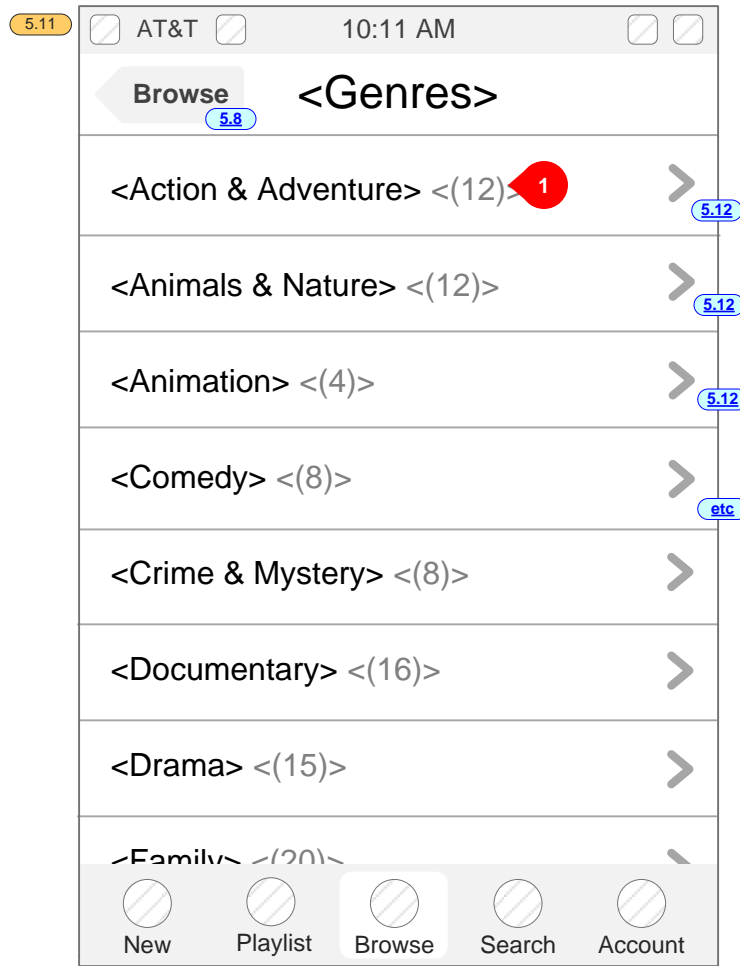


Browse – Genre List, Genre Display, Network/Studio List

- These pages are accessed by the main browse list.

Notes

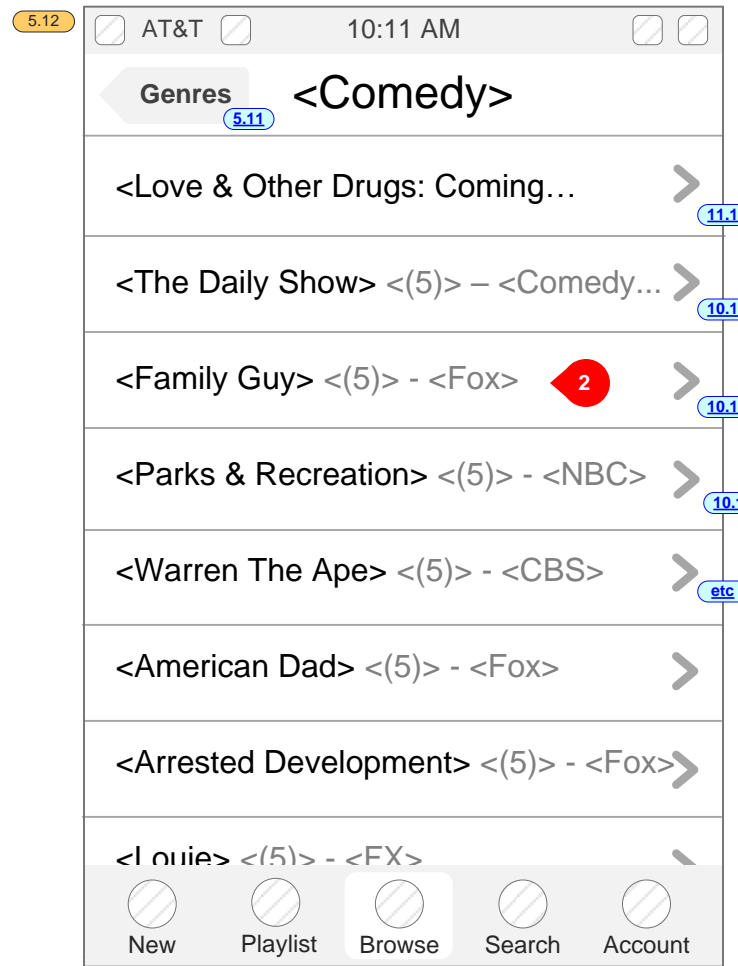
1. Parentheses indicate number of brands available for this genre.
2. Parentheses on this view indicates number of videos available for a brand. Also display studio or network for each brand.
3. Parentheses on this view indicate number of brands available for a network/studio.
3. At bottom of list, display one of these two sorting buttons. Page should default to sorting by alphabet, so the "Order by Popularity" will be the default button at bottom of page.



Order Alphabetically

Order by Popularity

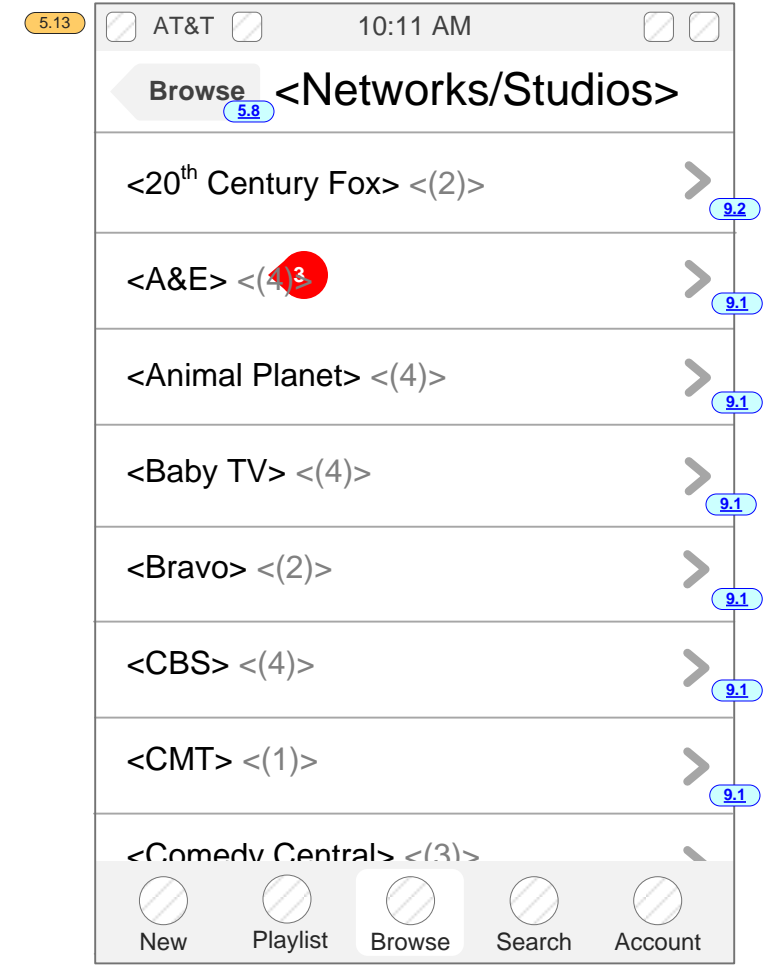
3



Order Alphabetically

Order by Popularity

3



Order Alphabetically

Order by Popularity

3

Note: No Studios for Launch. Do not show "Studios" in header.

TV Brand, Brand Details

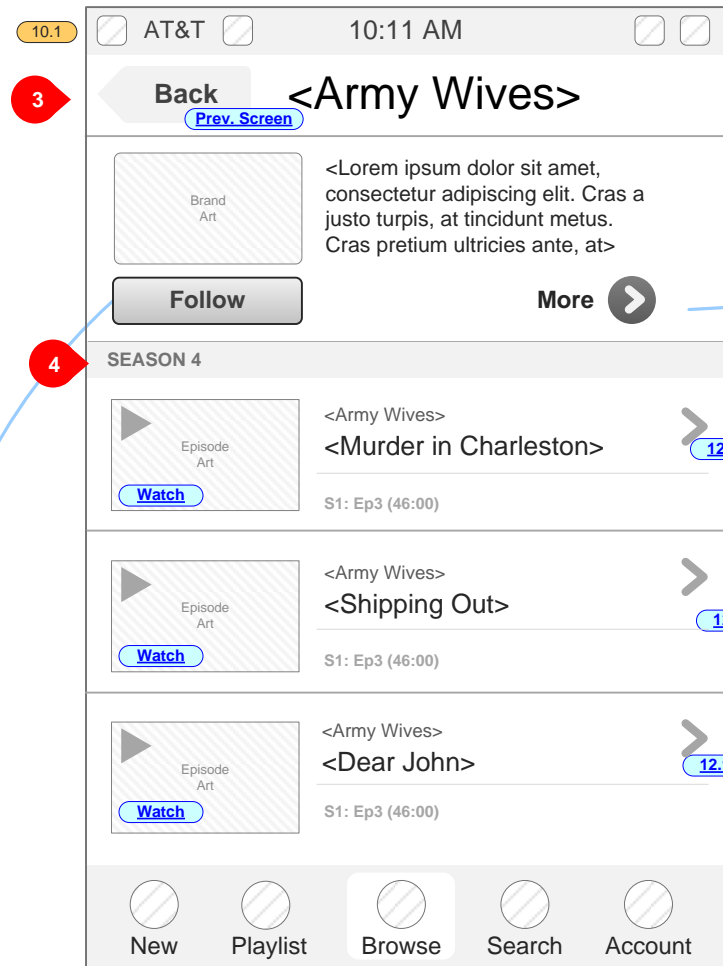
TV Brand page shows brief overview of the brand and listing of videos associated with the TV Brand.

Notes

- At bottom of list, display one of these two sorting buttons. Page should default to sorting by popularity, so the "Sort Alphabetically" will be the default button at bottom of page.
- Tap and hold on line item to call up context menu.
 - If item is Downloaded, change "Download" to "Remove download"
 - If item is "paused" during download, change "Download" to "Resume download"
 - If item is already in Playlist, change "Add to Playlist" to "Remove from Playlist"
- Note that "back" navigation should go back to referring screen ("Search" or "TV Shows" or "Movies", etc.)
- If there are more than two seasons available, show "All" and the seasons available. Default to "All". Tapping on "Season <x>" filters to only content from that season.

Allow user to tap-and-slide to move selection of seasons back and forth in bar.

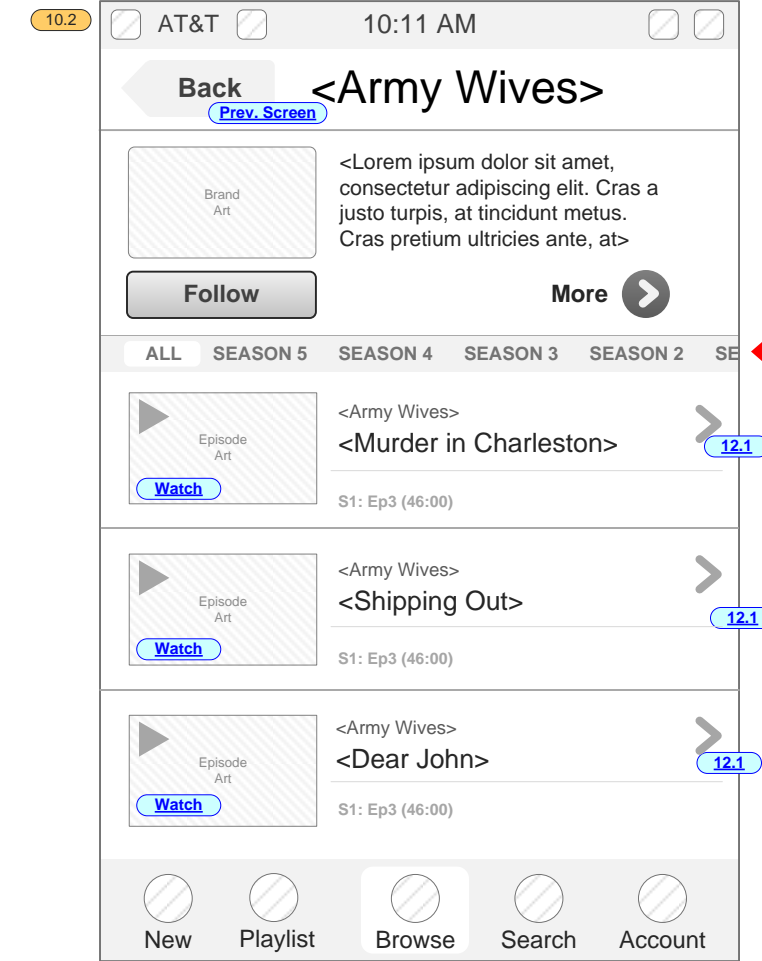
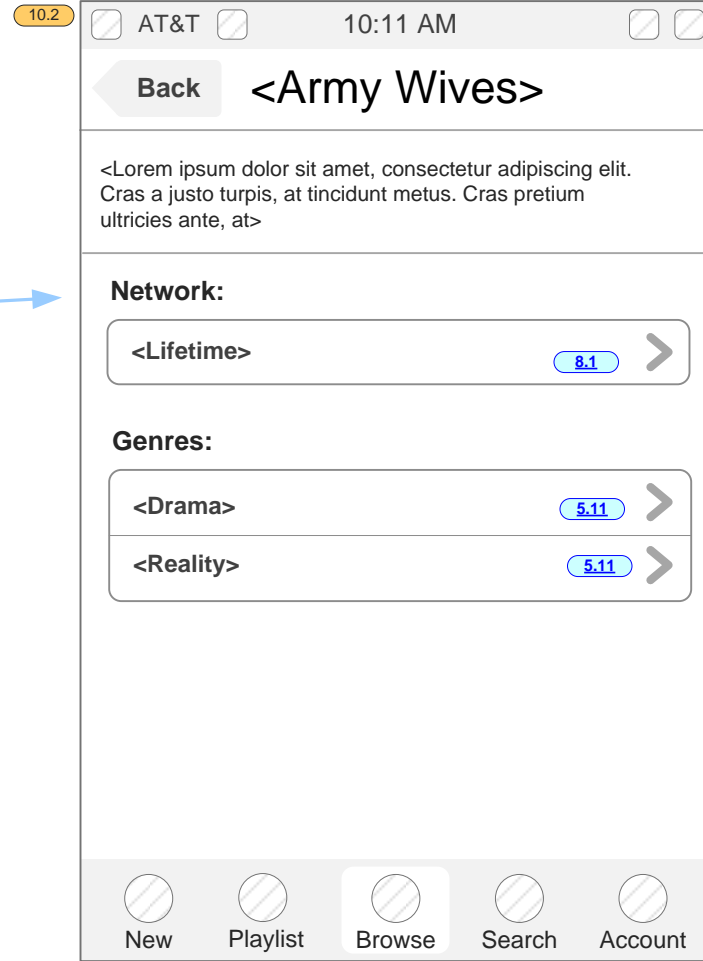
- Show this if only one season is available.



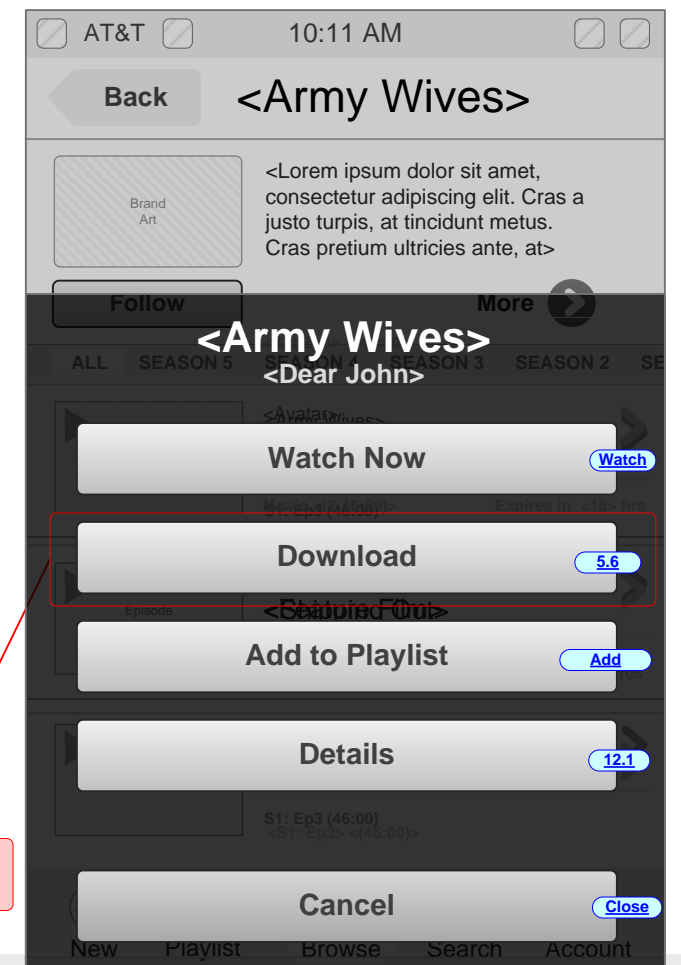
Showing view for not-subscribed user.



When "Follow" button is tapped, toggle to "Unfollow" and add this brand to the list of followed items.



Showing view for SUBSCRIBED user.



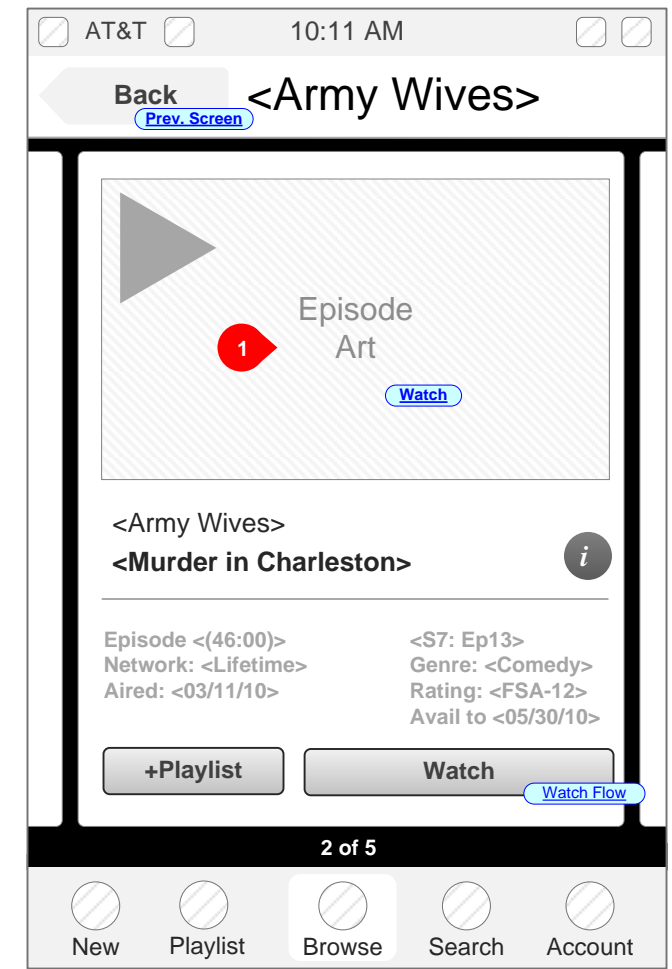
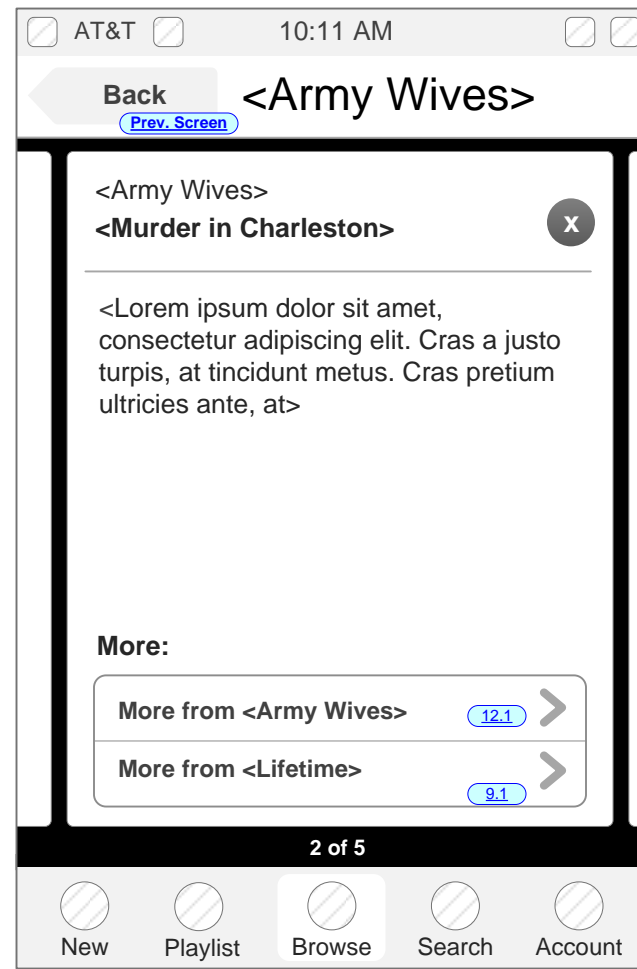
Downloads not for launch. Do not show button.

TV Details, TV Details Info

TV Brand page shows brief overview of the brand and listing of videos associated with the TV Brand.

Notes

1. The play overlay is consistent regardless of user state.
2. If item is not in Playlist, render button as indicated here.
3. Use "Peek" if there are videos before and after in the numeric sequence.



Tapping Playlist button toggles to its opposite state and adds or removes item from Playlist.

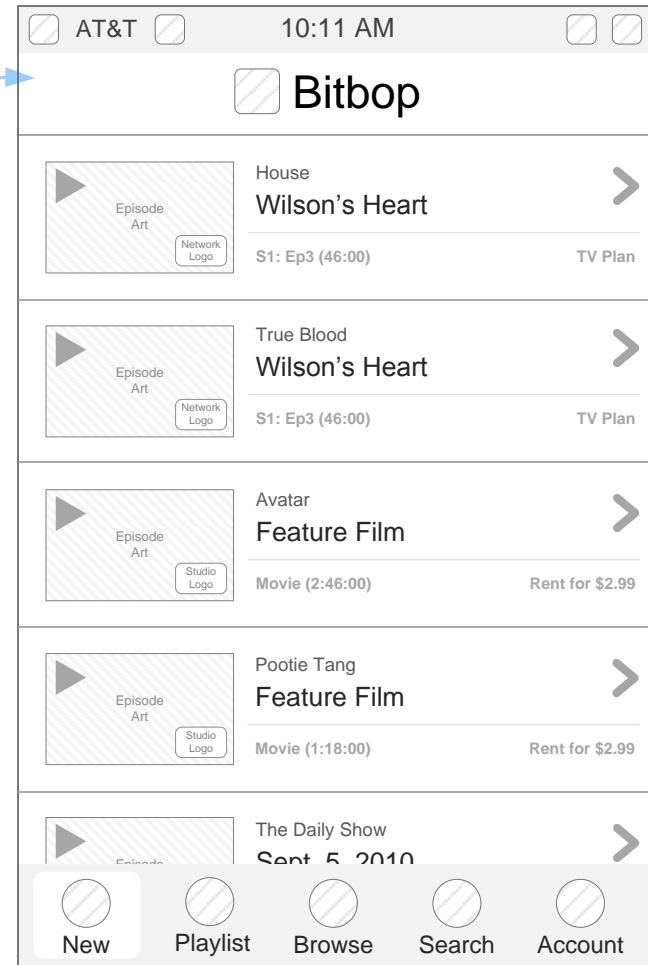
Info card only should flip in once "i" icon is tapped.

If user is subscribed to TV Plan, remove "TV Plan" and make the button "Watch"

General Layout

- 3GS resolution: 480x320
- 4 resolution: 960x640
- Proportional layout is identical.
- No landscape mode.
- Standard iOS tab navigation located at bottom of screen

The main pages (New, Playlist, Browse) have the Bitbop logo at the top.



Status Bar – Always Visible (except in media player) (does not scroll)

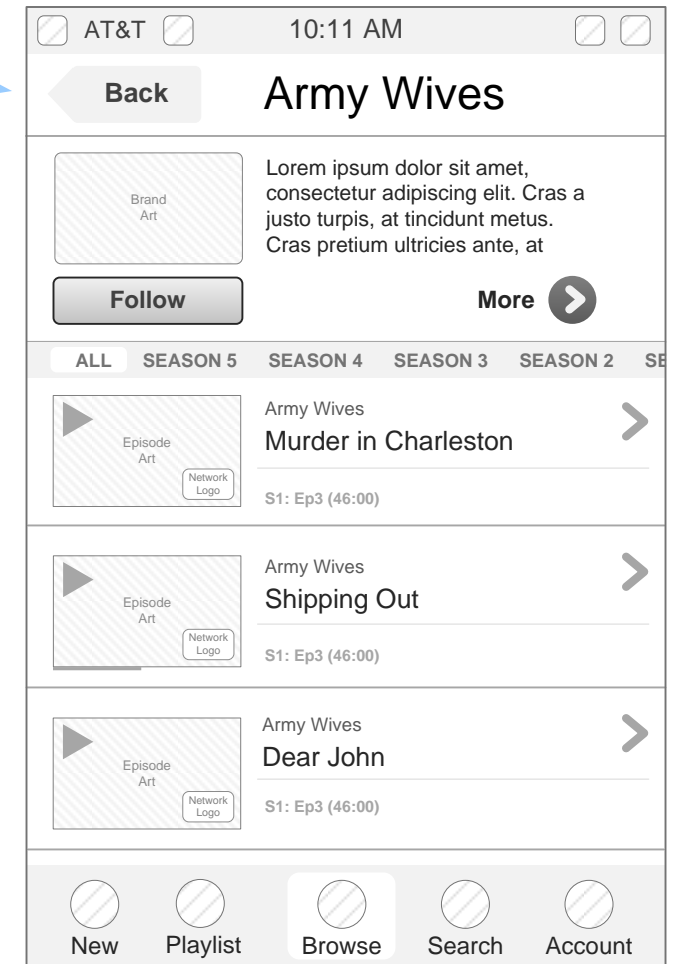
Navigation Bar – Displays "Bitbop" or page title. (does not scroll)

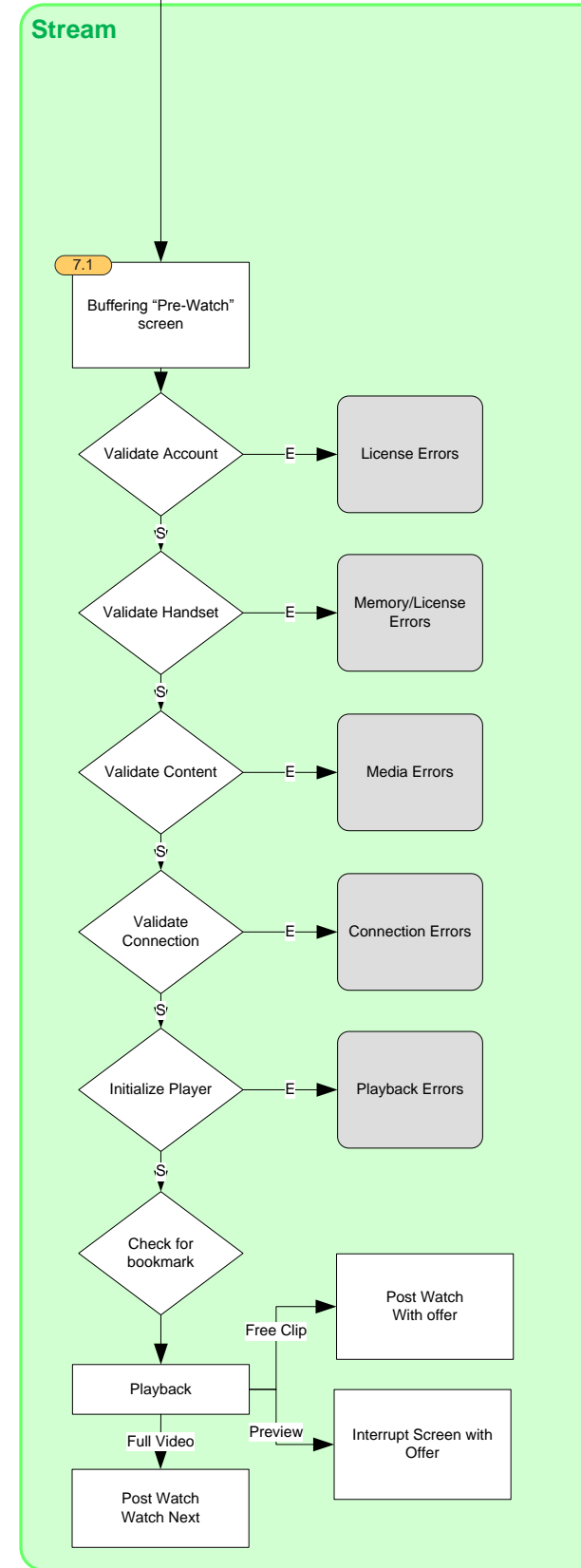
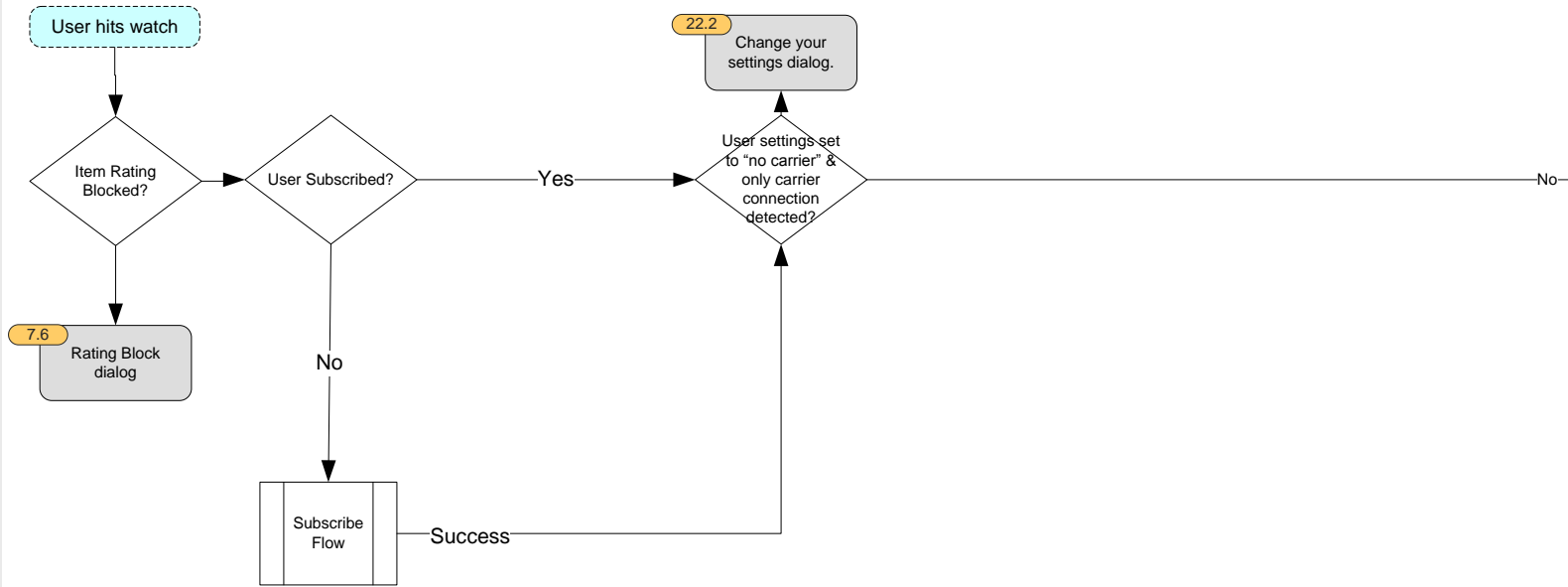
Content

Scrollable area if sufficient content

Tab Bar (does not scroll)

Sub pages have the page title and navigation rather than the Bitbop logomark and logo. Section remains highlighted in the Tab Bar.





This is the FOR-LAUNCH watch flow. It has removed all reference to:
 -Downloads
 -Rentals/Movies
 -Stream Quality Selector

See next page for the future watch flow.

Buffering pre-watch screen shows contextual information about the video license, connection setting

- If the user chooses to cancel during any dialog presentation, it brings them back to where they initiated playback.
- Errors and their codes are in the Bitbop Error Sheet.